

[ RECENT WORK · CURRENT YEAR ]

# Recently delivered.

Five Alberta projects · late 2025 through Q2 2026.  
Multifamily · retirement living · roof systems · luxury custom.

INDEX · 5 PROJECTS · 2025 — 2026

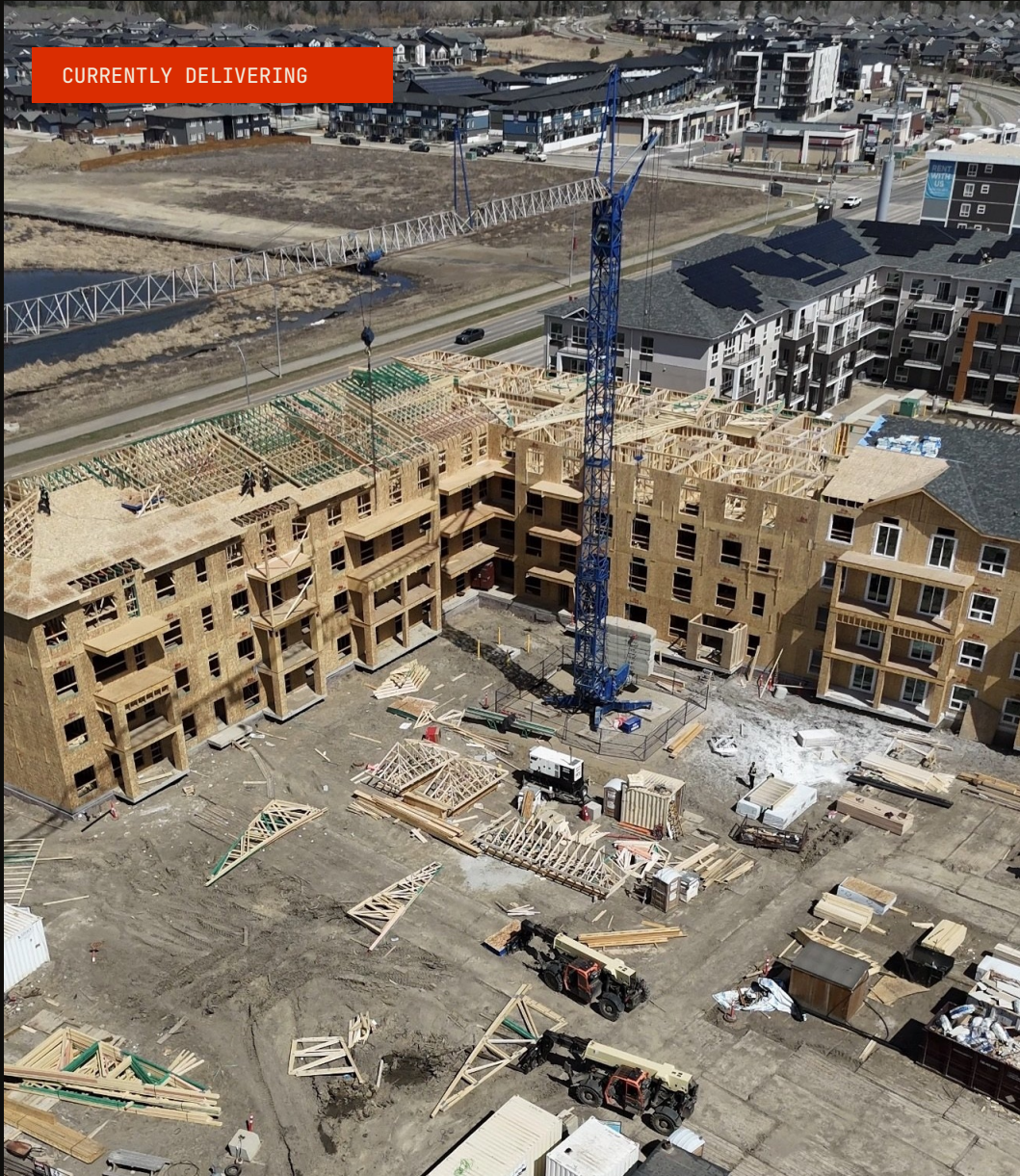
- /01**  
St. Albert Multifamily  
140+ UNITS
- /02**  
Sherwood Park Retirement  
176+ UNITS
- /03**  
Sanctuary at Twin Brooks  
~8 WEEKS
- /04**  
Arden Leduc — Roof Sys.  
18,000 SQFT
- /05**  
Private Luxury Estate  
11,000 SQFT

**36**  
FIELD WORKERS

**5,700 ft<sup>2</sup>**  
BIWEEKLY OUTPUT

**1–5 days**  
MOBILIZATION

587 · 974 · 6749 · [CONTACT@TIMBERCRAFT.TECH](mailto:CONTACT@TIMBERCRAFT.TECH) · [TIMBERCRAFT.TECH](https://TIMBERCRAFT.TECH)



# / 01

ST. ALBERT, ALBERTA

JANUARY – MAY 2026

## St. Albert Multifamily Development

140+ UNITS

<4 MONTHS

CRANE ASSISTED

### + PROJECT SUMMARY

Large-scale multifamily residential development consisting of more than 140 residential units. Accelerated structural wood framing operations — floor systems, wall systems, and crane-assisted production framing — executed inside a compressed construction schedule.

### + CAPABILITIES

- Large-scale multifamily framing
- Accelerated production scheduling
- Crew coordination & production management
- Alberta winter construction execution



# / 02

SHERWOOD PARK, ALBERTA

SEPTEMBER – DECEMBER 2025

## Sherwood Park Retirement Living

176+ UNITS

4 MONTHS

WINTER DELIVERY

### + PROJECT SUMMARY

Large-scale retirement living multifamily development completed under Alberta winter conditions with accelerated production and large manpower deployment.

### + CAPABILITIES

- Large-scale multifamily framing
- Large manpower deployment
- Alberta winter construction execution
- Structural wood framing expertise



/ 03

EDMONTON, ALBERTA

NOVEMBER 2025 – JANUARY 2026

## The Sanctuary at Twin Brooks

~8 WEEKS

MID-PROJECT TAKEOVER

2ND FLOOR START

### + PROJECT SUMMARY

Brought in to accelerate framing production and support project completion. Timbercraft assumed framing operations beginning at the second-floor stage and carried the project through to completion.

### + CAPABILITIES

- Accelerated production scheduling
- Crew coordination & production management
- Mid-project handoff & recovery
- Structural wood framing expertise



/ 04

LEDUC, ALBERTA

Q1 2026 · ~3 WEEKS

## Arden Leduc — Phase 2 Roof System

18,000+ SQFT

~3 WEEKS

MULTIFAMILY ROOF

### + PROJECT SUMMARY

Brought in to support execution of the Phase 2 roof system. More than 18,000 square feet of multifamily roof framing completed within approximately three weeks.

### + CAPABILITIES

- Large-scale roof systems
- Accelerated production scheduling
- Multi-crew sequencing
- Inspection-ready framing



/ 05

PARKLAND COUNTY, ALBERTA

JANUARY – MARCH 2026

## Private Luxury Estate — Parkland County

11,000+ SQFT

COMPLEX ROOF SYSTEMS

PREMIUM FINISH

### + PROJECT SUMMARY

Structural framing of an 11,000+ square foot private luxury estate featuring complex roof systems, oversized openings, and premium architectural framing.

### + CAPABILITIES

- Luxury custom builds
- Complex architectural framing
- Oversized openings & layout precision
- Premium finish-ready framing

# Let's frame your next one.

Send us your drawings, scope, and schedule.  
We respond to bid packages within 2–5 business days.

SUBMIT YOUR BID PACKAGE →

VISIT TIMBERCRAFT.TECH ↗

CALL

587 · 974 · 6749

EMAIL

contact@timbercraft.tech

VISIT

Edmonton · Alberta

WEB

timbercraft.tech